

Configurazione IPv6 - due reti tramite router

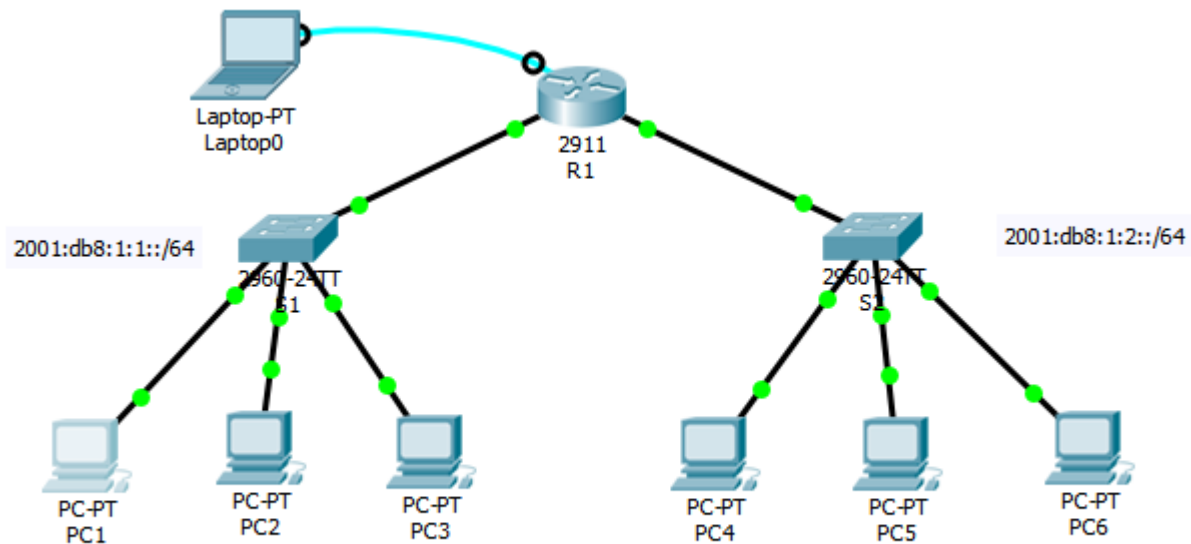


Tabella degli indirizzi

Device	Interface	IPv6 Address/Prefix	Default Gateway
R1	G0/0	2001:DB8:1:1::1/64	N/A
	G0/1	2001:DB8:1:2::1/64	N/A
	Link-local	FE80::1	N/A
PC1	NIC	2001:DB8:1:1::2/64	FE80::1
PC2	NIC	2001:DB8:1:1::3/64	FE80::1
PC3	NIC	2001:DB8:1:1::4/64	FE80::1
PC4	NIC	2001:DB8:1:2::2/64	FE80::1
PC5	NIC	2001:DB8:1:2::3/64	FE80::1
PC6	NIC	2001:DB8:1:2::4/64	FE80::1

Abilitare il router a trasmettere pacchetti IPv6

```
R1(config)#ipv6 unicast-routing
```

Questo comando serve per abilitare il router all'utilizzo degli indirizzi IPv6.

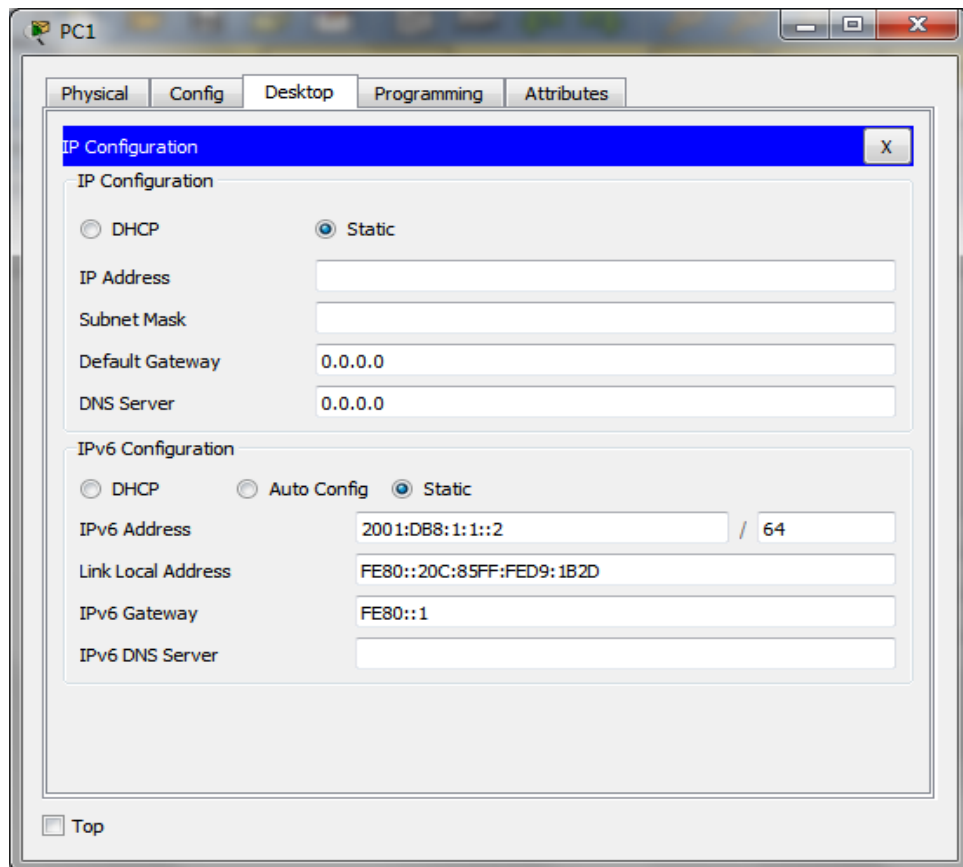
Configurare IPv6 addressing su GigabitEthernet0/0.

```
R1(config)#interface gigabitEthernet 0/0
R1(config-if)#ipv6 address 2001:DB8:1:1::1/64
R1(config-if)#ipv6 address FE80::1 link-local
R1(config-if)#no shutdown
```

Configurare IPv6 addressing su GigabitEthernet0/1.

```
R1(config)#interface gigabitEthernet 0/1
R1(config-if)#ipv6 address 2001:DB8:1:2::1/64
R1(config-if)#ipv6 address FE80::1 link-local
R1(config-if)#no shutdown
```

Configurare IPv6 addressing su PC1.



Configurare IPv6 addressing su PC2, PC3, PC4, PC5, PC6.

Verificare la connettività

